

# Starfloor Click Ultimate 30

LUXURY VINYL TILES

The Ultimate  
hassle-free  
modular floor

 **Tarkett**

# A - Tools for the installation of Starfloor Click Ultimate 30

---

- Knife with straight blade
- Protective gloves
- White-headed rubber mallet
- Folding rule/measuring tape
- Pencil/T-square
- Spacers
- Jigsaw
- Scriber

# B - Preparation and important information prior to installation

---

## B.1 EXAMINATION OF THE GOODS

Check the quality of the goods supplied before proceeding with the preparation work. Claims cannot be made on goods that have been cut to size or laid. The installation must be done using the same production batch in order to guarantee the uniformity of colour and design.

## B.2 ACCLIMATISATION

**Starfloor Click Ultimate 30** should acclimatise for at least 24 hours in the rooms where it is to be installed according to the conditions detailed below.

## B.3 ROOM TEMPERATURE CONDITIONS

**Starfloor Click Ultimate 30** should be installed at room temperature, between 15°C and 25°C. The temperature of the subfloor on which the product is to be installed must not be less than 10°C.

## B.4 SUBFLOOR CONDITION

Prepare the surface according to the standards in force in your country. The surface must be level, firm and not exposed to rising humidity. See permitted subfloors mentioned below. The maximum flatness tolerance is 3 mm per 2 linear meter. Textile and needle felt floor coverings must be removed. In principle, it is recommended that all floor coverings are removed.

We advise not proceeding with the installation of **Starfloor Click Ultimate 30** in the event of:

- Significant uneven areas (in excess of standards of flatness applied in the countries concerned),
- Cracks in the subfloor,
- Subfloor insufficiently dry,
- Surface insufficiently firm, too porous or too rough,
- Surface contaminated, e.g. by oil, wax, varnish or paint residue,
- Difference in level between the subfloor and other structural elements,
- Unsuitable subfloor temperature (below 10°C),
- No heating protocol in case of underfloor heating system.
- Underfloor heating which maximum temperature exceeds 27°C.



## PERMITTED SUBFLOORS:

- Laminate/parquet when ventilated underneath
- Even stone floors, marble, ashlar
- Ceramic tiles (seam requirements: < 6 mm wide/< 3 mm deep)
- Compact PVC coverings
- Uneven floor screeds: new or reworked
- The warranty of the product is invalid when unapproved subfloors are used.

# C - Installation

## C.1 INSTALLATION DIRECTION

Always start the installation from left to right. In a room, install the panels so that the planks are in the direction of the light.

In long, narrow rooms, such as corridors, **Starfloor Click Ultimate 30** can be installed in the direction of the room.

## C.2 INSTALLATION

Using a suitable spacer, create an expansion joint at least 6 mm wide along the entire periphery. Maintain a gap of 6 mm from all fixtures in the room, such as pipes, door frames etc. In principle, this expansion joint must not be filled with silicone, electric cables or other items. If the wall is not straight, use a scribber to reproduce the wall profile on the 1st installed line. This will ensure to keep the 6mm expansion gap everywhere.

## C.3 THE USE OF SILICONE IS PERMITTED IN THE FOLLOWING EXCEPTIONAL CASES:

### • Damp rooms:

Edge joints in damp rooms of max. 10 m<sup>2</sup>, e.g. bathrooms or kitchens, may be made with silicone in order to avoid any infiltration of water through the expansion joint and onto the installed surface. For all larger areas in damp rooms, we recommend starting by applying insulating tape to the area of the joint before filling it with a quantity of silicone and/or using a skirting board with a sealing lip.

### • Door frames:

If the door frames cannot be shortened, we recommend a 3 mm gap for the expansion joint, which can be filled with silicone. If the frames can be shortened, make sure that there is a 6 mm expansion joint in relation to the wall.

## C.4 INSTALLATION

Install the first panel with the tongue side facing the wall, then install all the other panels in the same from left to right. Make sure that the ends are placed one on top of the other so that the grooves and the tongues correspond exactly and lock them by tapping lightly with a rubber mallet. To install the next row, place the left-over panel of at least 30 cm in length into the longitudinal groove of the row already installed at an angle of approximately 30° and lower it into the previous row using slight pressure. Take the next panel, place it also at an angle of approximately 30° in the longitudinal direction on the panel of the first row already installed, align it as closely as possible with the end of the panel previously installed and lock it as described above. This method is then used to install all of the other rows. Make sure that the end joints are offset by at least 30 cm in the individual rows in order to achieve the best installation. To install the last row, the distance between the wall and the row installed is measured and transferred to the panel. The last row installed should be as close to half a panel's width as possible. Remember the 6 mm wide expansion joint.





### C.5 EXPANSION PROFILES WITHIN THE AREA

Rooms with an uninterrupted area of 15 x 15 m may benefit from a joint-free installation, taking into account the minimum expansion gap of 12 mm. Expansion profiles have to be used in rooms that are extremely long and narrow. Room areas interrupted by vertical elements (columns, walls, door frames, etc.) must be divided using expansion joints of at least 6 mm at the same level as these elements. When installing skirting boards, transition profiles or end profiles, the skirting boards or profiles must never be fixed to the floor covering. Contact your Tarkett representative if you would like more information on this.

### IMPORTANT INFORMATION ON COMPLETING THE INSTALLATION

- Remove all of the spacers.
- **Starfloor Click Ultimate 30** must never be fixed or blocked to the subfloor, underlay, furniture or other fixtures.
- The appropriate use of anti-dirt areas and mats greatly reduces dirt deposits. Please use sliders suitable for hard floors if mobile furniture is used. Please provide office chairs and other wheeled equipment with W type castors.
- We recommend the application of a protective coat of TarkoProtect before the finished floor is used.

### PARTICULARITIES AND EXCEPTIONAL SITUATIONS

- Before installation, the product should acclimatise at room temperature (between 15°C and 25°C) for at least 24 hours. This is especially important in unheated rooms, conservatories or adjacent to patio doors.
- At all times after installation, extreme variations in room temperature should be avoided (below 10°C or over 50°C, measured above the floor).
- When installing **Starfloor Click Ultimate 30** in areas that are exposed to significant temperature fluctuations the expansion joint may be doubled to 12mm to secure the installation on the entire periphery and from all fixtures in the room.
- Dyed rubber-based wheels and castors (e.g. vehicle tyres, pneumatic tyres) may cause irreversible colour changes in cases of direct interaction and contact with vinyl surfaces.

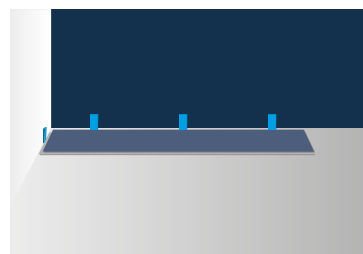
### CLEANING AND MAINTENANCE

Give the floor a final clean after installation. The floor can be maintained by sweeping, vacuuming or mopping. Use a brush and a pH-neutral detergent to remove stubborn dirt. All aggressive and staining substances must be removed from the surface immediately.

Read our installation instructions below and see our tutorial video for installation at [home.tarkett.com](http://home.tarkett.com) on the collection page of Starfloor Click Ultimate 30.

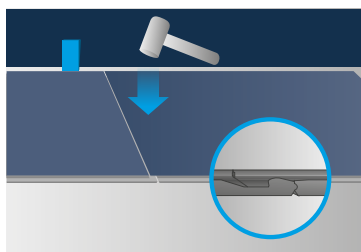
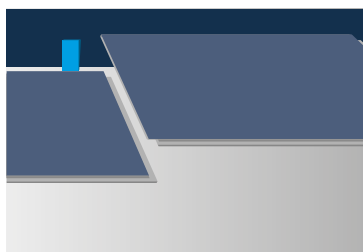
### STEP 1

Install the first panel with the tongue side facing the wall, then install all the other panels in the same way from left to right.



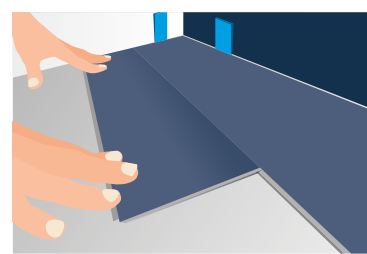
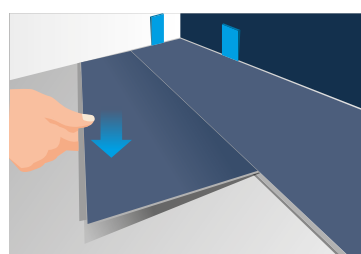
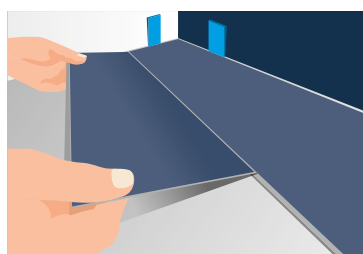
### STEP 2

Make sure that the ends are placed one on top of the other so that the grooves and the tongues correspond exactly and lock them by tapping lightly with a rubber mallet.



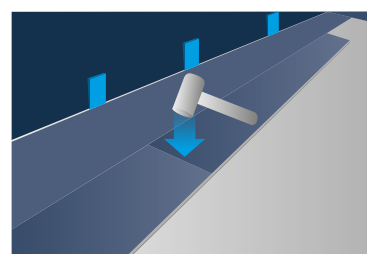
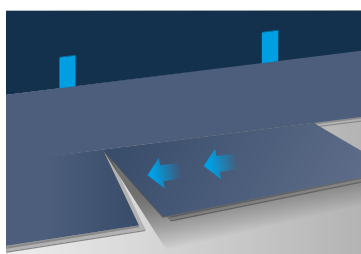
### STEP 3

To install the next row, place the left-over panel of at least 30 cm in length into the longitudinal groove of the row already installed at an angle of approximately 30° and lower it into the previous row using slight pressure.



### STEP 4

Take the next panel, place it also at an angle of approximately 30° in the longitudinal direction on the panel of the first row already installed, align it as closely as possible with the end of the panel previously installed and lock it as described above.



This method is then used to install all of the other rows. Make sure that the end joints are offset by at least 30 cm in the individual rows in order to achieve the best installation. To install the last row, the distance between the wall and the row installed is measured and transferred to the panel. The last row installed should be as close to half a panel's width as possible. Remember the 6 mm wide expansion joint.

### For further information, please contact your local sales office

■ **WESTERN EUROPE:** Austria: Tarkett Holding GmbH, Niederlassung Wien – Tel. +43 1 47 88 062 ■ **Belgium:** Tarkett Belux Sprl – Tel. +32 16 35 98 80 ■ **Denmark:** Tarkett A/S – Tel. +45 43 90 60 11 ■ **Finland:** Tarkett Oy – Tel. +358 9 4257 9000 ■ **France:** Tarkett SAS – Tel. +33 1 41 20 42 49 ■ **Germany:** Tarkett Holding GmbH – Tel. +49 62 33 810 ■ **Greece:** Tarkett Monoprosopi Ltd – Tel. +30 210 6745 340 ■ **Italy:** Tarkett S.p.A. – Tel. +39 0744 7551 ■ **Luxembourg:** Tarkett GDL SA – Tel. +352 949 211 8804 ■ **Netherlands:** Tarkett BV – Tel. +31 416 685 491 ■ **Norway:** Tarkett AS – Tel. +47 32 20 92 00 ■ **Portugal:** Tarkett SA – Tel. +351 21 427 64 20 ■ **Spain:** Tarkett Floors S.L. – Tel. +34 91 358 00 35 ■ **Sweden:** Tarkett Sverige AB – Tel. +46 771 25 19 00 ■ **Switzerland:** Tarkett Holding GmbH – Tel. +41 043 233 79 24 ■ **Turkey:** Tarkett Aspen – Tel. +90 212 213 65 80 ■ **United Kingdom:** Tarkett Ltd – Tel. +44 (0) 1622 854 040 ■ **EASTERN EUROPE:** **Baltic Countries:** Tarkett Baltics: Tel. +370 37 262 220 ■ **Czech Republic:** Tarkett org. slozka – Tel. +420 271 001 600 ■ **Hungary:** Tarkett Polska SP Z.O.O. magyarországi fióktelepe – Tel. +36 1 437 8150 ■ **Poland:** Tarkett Polska Sp. z o. o. – Tel. +48 22 16 09 231 ■ **Russian Federation:** ZAO Tarkett RUS – Tel. +7 495 775 3737 ■ **Slovakia:** Tarkett Polska, organizačná zložka – Tel. +421 2 48291 317 ■ **South East Europe:** Tarkett SEE – Tel. +381 21 7557 649 (44) 569 12 21 ■ **Ukraine:** Tarkett UA – Tel. +38 (0) 44 569 12 21 ■ **ASIA AND OCEANIA:** **Australia:** Tarkett Australia Pty Ltd – Tel. +61 2 88 53 12 00 ■ **China:** Tarkett Floor Covering (Shanghai) Co. Ltd. – Tel. +86 (21) 60 95 68 38 ext 841 ■ **North East Asia:** Tarkett Hong Kong Limited – Tel. +852 2511 8716 ■ **India:** Tarkett Flooring India Pvt. Ltd. – Bangalore – Tel. +91 80 4130 3793 – New Delhi – Tel. +91 11 4352 4073 – Mumbai – Tel. +91 22 2648 8750 ■ **South East Asia:** Tarkett Flooring Singapore Pte. Ltd. – Tel. +65 6346 1585 ■ **AFRICA:** Tarkett International: Tel. +33 1 41 20 41 01 ■ **MIDDLE EAST:** Tarkett Middle East: Tel. +961 1 51 3363/4 ■ **Israel:** Tarkett International: Tel. +33 1 41 20 41 01 ■ **NORTH AMERICA:** **USA:** Tarkett Inc. – Tel. +1 713 869 5811 / Johnsonite – Tel. +1 440 543 8916 ■ **Canada:** Tarkett Inc. – Tel. +1 450 293 173 ■ **LATIN AMERICA:** **Brazil:** Tarkett – Tel. 55 12 3954 7108 ■ **Argentina - Chile - Uruguay:** Tarkett Latam Mercosur – Tel. +54 11 47 08 07 72 / +54 911 44 46 88 82 ■ **Bolivia - Colombia - Ecuador - Panama - Paraguay - Peru - Trinidad and Tobago - Venezuela:** Tarkett – Tel. +55 11 98410 9310 / +55 11 95494 0069 ■ **Mexico / Central America:** Tarkett Latam Mexico – Tel. +55 11 98410 9310